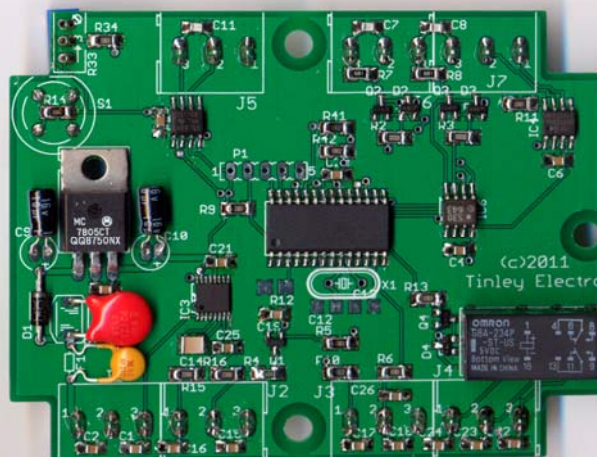


# Tinley Loadcell Amplifier

- ◆ NMEA Output
- ◆ RS232 Output
- ◆ Alarm or Trip relay
- ◆ 0-5 Volt output
- ◆ 2 x NMEA inputs for multiplexing
- ◆ Very high accuracy and stability
- ◆ Direct connection to Stowe Dataline GX Display
- ◆ CANbus (NMEA 2000 ready)



The Digital Loadcell Amplifier converts standard load cells or load pins into RS232, NMEA 0183, CANbus, (NMEA 2000 ready), or 0-5V analogue data. A trip relay with change over contacts is provided for use as an alarm output or limit switch. The DLA1 can be connected directly to our Stowe Dataline GX display and a Diverse Loadpin to work as a standalone system, with user friendly calibration and alarm settings carried out entirely from the display buttons. Alternatively the DLA1 can be calibrated remotely from a PC connected via RS232 or via a push button and adjustment inside the top cover. The DLA1 has two RS232/NMEA inputs and can be programmed to multiplex these inputs to combine data along with the measured load before re-transmitting it via any one of the outputs. The DLA1 offers fantastic accuracy, stability and noise immunity compared to previous comparable systems.



**Contact Details:**  
 Tinley Electronics Ltd  
 235 Bentley Way  
 LYMINGTON  
 England  
 SO41 8JW  
 Tel: 01590 610071  
 Fax: 01590 610072  
 e-mail: [electronics@tinley.net](mailto:electronics@tinley.net)  
[www.tinleyelectronics.com](http://www.tinleyelectronics.com)